

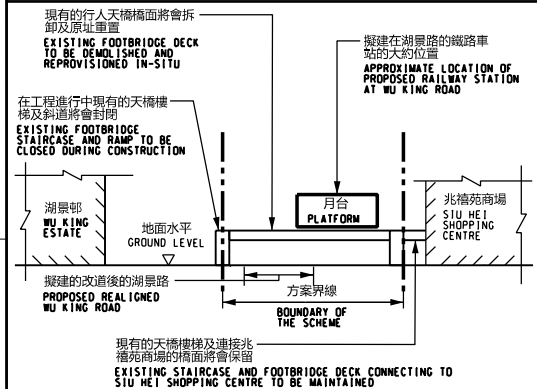
位置圖  
LOCATION PLAN

## 說明 NOTES

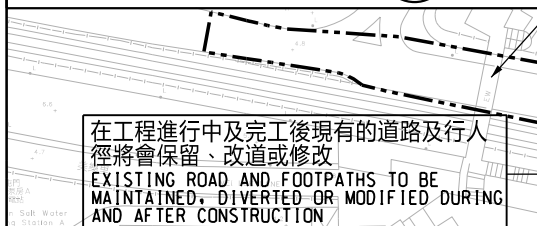
此圖根據第TMSE-G06號圖則制訂，分別以藍色及紅色標明將暫時封閉及改動的湖月街路段。

THIS DRAWING IS PREPARED BASED ON DRAWING NO. TMSE-G06 AND IS INTENDED TO SHOW THE TEMPORARY CLOSURE AND ALTERATION OF SECTIONS OF WU YUET STREET (HIGHLIGHTED IN BLUE AND RED RESPECTIVELY).

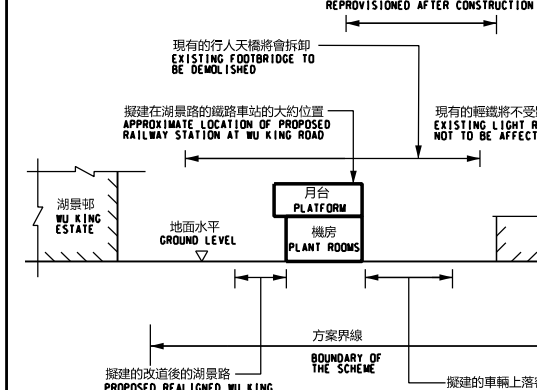
剖面圖 SECTION  
NOT TO SCALE



剖面圖 SECTION  
NOT TO SCALE



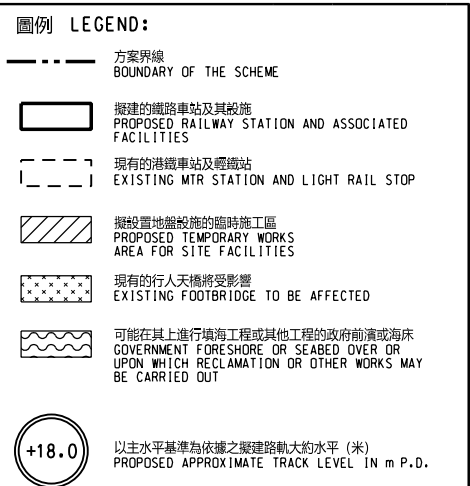
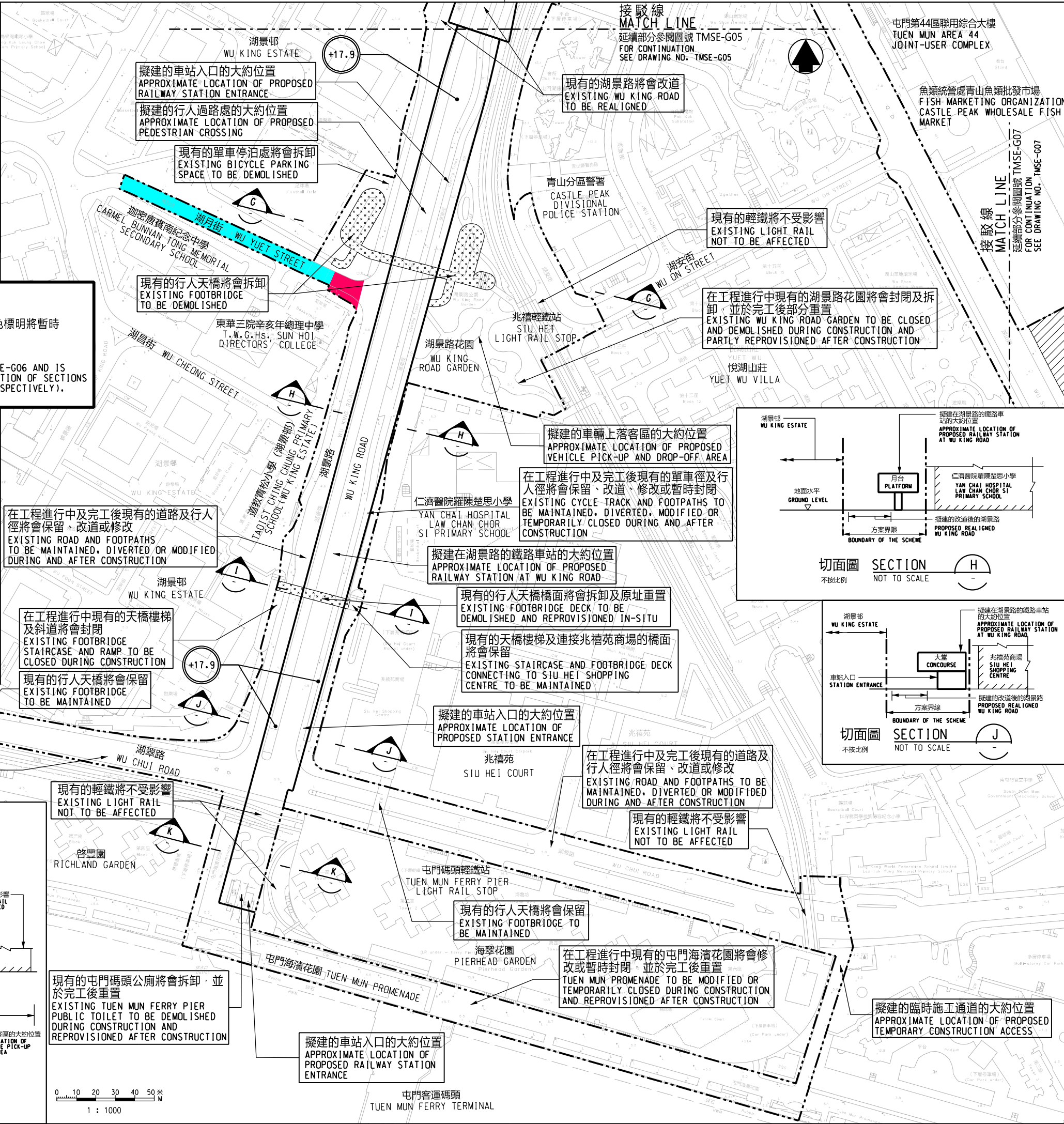
剖面圖 SECTION  
NOT TO SCALE



剖面圖 SECTION  
NOT TO SCALE

剖面圖 SECTION  
NOT TO SCALE

剖面圖 SECTION  
NOT TO SCALE



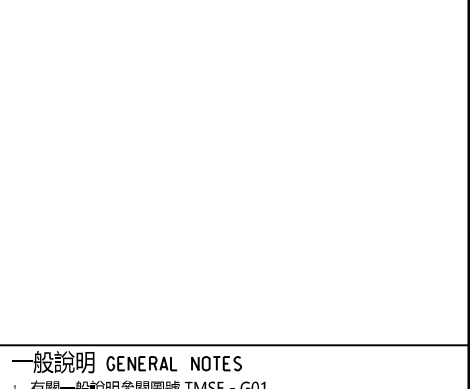
圖例 LEGEND:

## 一般說明 GENERAL NOTES

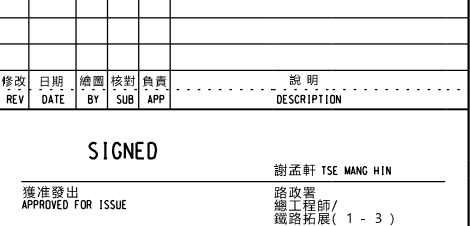
1. 有關一般說明參閱圖號 TMSE - G01.  
FOR GENERAL NOTES, REFER TO DRAWING NO. TMSE-G01.

修訂表  
TABLE OF AMENDMENTS

剖面圖 SECTION  
NOT TO SCALE



剖面圖 SECTION  
NOT TO SCALE



剖面圖 SECTION  
NOT TO SCALE

圖則名稱 DRAWING TITLE  
鐵路條例 (第519章)  
屯門南延線  
暫時封閉及改動湖月街路段

RAILWAYS ORDINANCE (CHAPTER 519)  
TUEN MUN SOUTH EXTENSION  
TEMPORARY CLOSURE AND ALTERATION OF SECTIONS OF WU YUET STREET

圖號 DRAWING NO.  
TMSE/G06/0010/2

香港特別行政區政府  
THE GOVERNMENT OF THE HONG KONG  
SPECIAL ADMINISTRATIVE REGION  
路政署  
HIGHWAYS DEPARTMENT  
鐵路拓展處  
RAILWAY DEVELOPMENT OFFICE