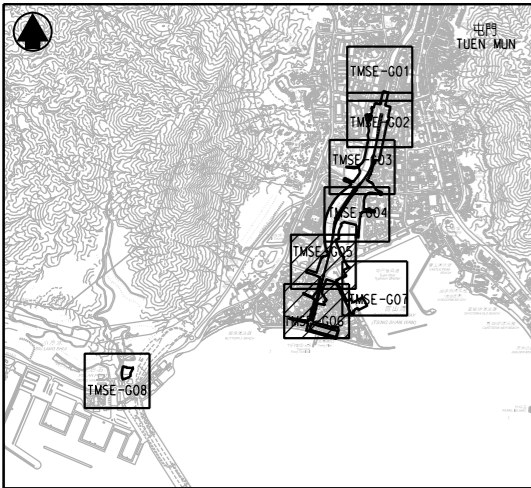


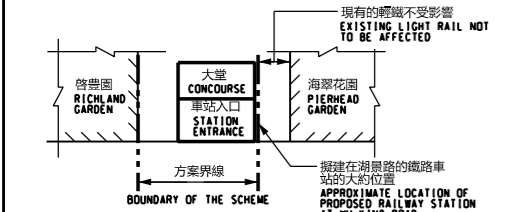
說明 NOTES

此圖根據第TMSE-G06號圖則制訂，以黃色標明將暫時封閉的湖景路花園及以綠色標明將暫時封閉的部分屯門海濱花園和毗鄰的行人路。

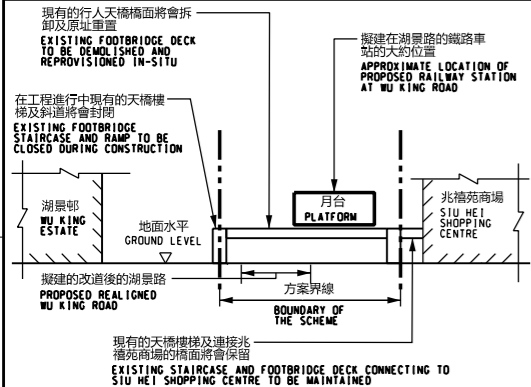
THIS DRAWING IS PREPARED BASED ON DRAWING NO. TMSE-G06 AND IS INTENDED TO SHOW THE TEMPORARY CLOSURE OF WU KING ROAD GARDEN (HIGHLIGHTED IN YELLOW) AND TEMPORARY CLOSURE OF PART OF TUEN MUN PROMENADE AND ITS ADJACENT FOOTPATHS (HIGHLIGHTED IN GREEN).



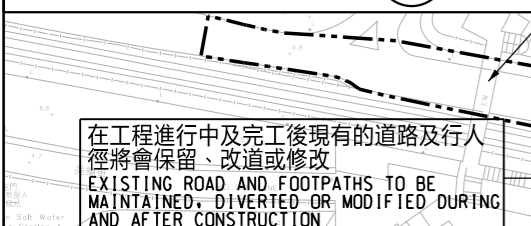
位置圖 LOCATION PLAN
不按比例 NOT TO SCALE



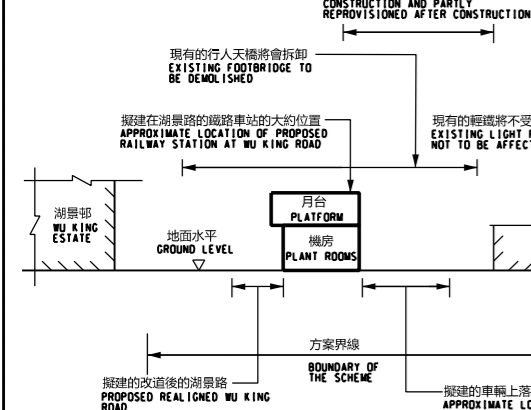
切面圖 SECTION K
不按比例 NOT TO SCALE



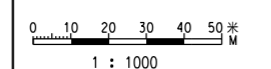
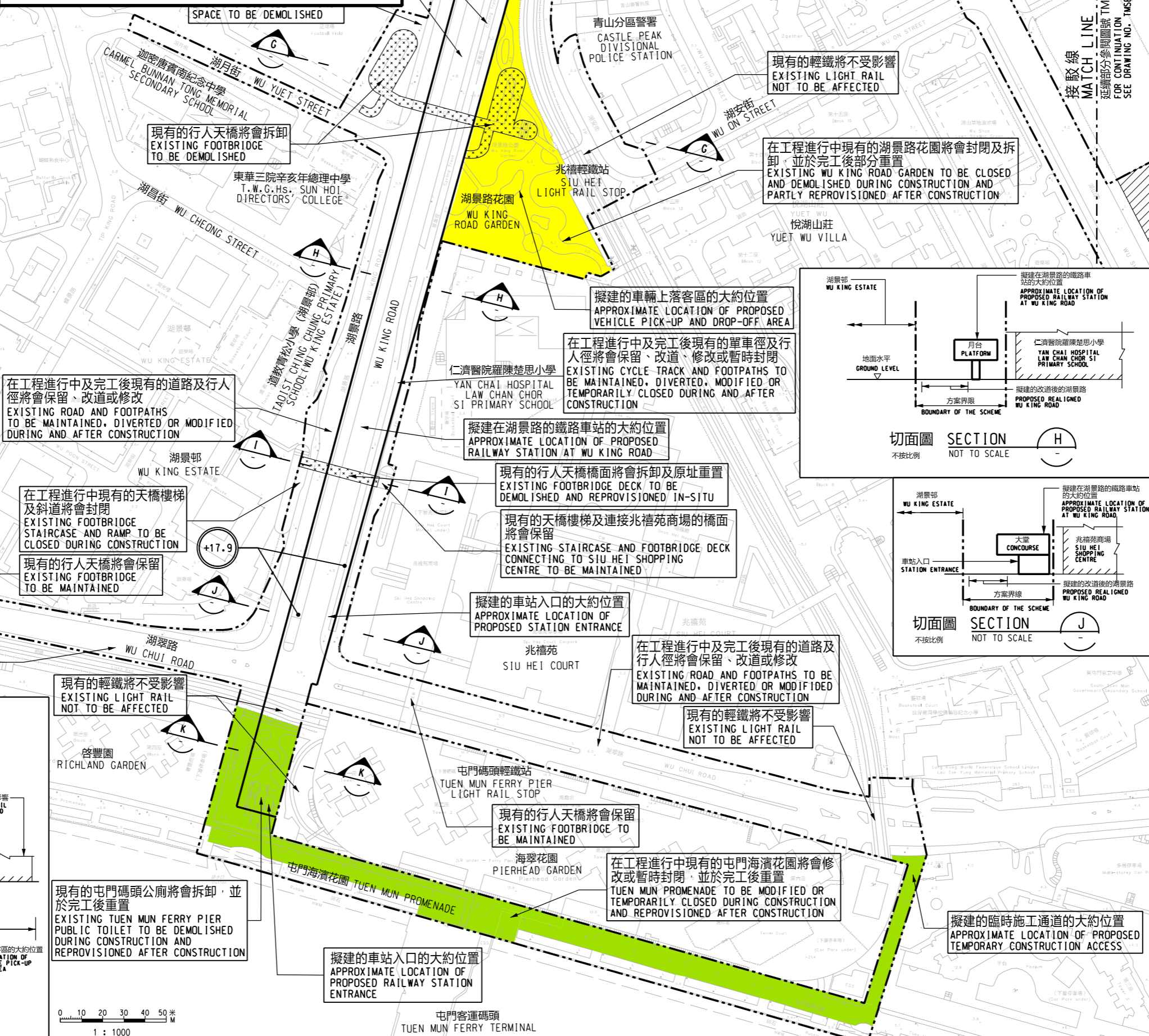
切面圖 SECTION I
不按比例 NOT TO SCALE



切面圖 SECTION J
不按比例 NOT TO SCALE



切面圖 SECTION G
不按比例 NOT TO SCALE



- 圖例 LEGEND:**
- 方案界線 BOUNDARY OF THE SCHEME
 - 擬建的鐵路車站及其設施 PROPOSED RAILWAY STATION AND ASSOCIATED FACILITIES
 - 現有的港鐵車站及輕鐵站 EXISTING MTR STATION AND LIGHT RAIL STOP
 - 擬置地盤設施的臨時施工區 AREA FOR SITE FACILITIES
 - 現有的行人天橋將受影響 EXISTING FOOTBRIDGE TO BE AFFECTED
 - 可能在其上進行填海工程或其他工程的政府前濱或海床 GOVERNMENT FORESHORE OR SEA BED OVER OR UPON WHICH RECLAMATION OR OTHER WORKS MAY BE CARRIED OUT
 - +18.0 以主水平基準為依據之擬建路軌大約水平 (米) PROPOSED APPROXIMATE TRACK LEVEL IN m P.D.



切面圖 SECTION H
不按比例 NOT TO SCALE

一般說明 GENERAL NOTES

1. 有關一般說明參閱圖號 TMSE-G01. FOR GENERAL NOTES, REFER TO DRAWING NO. TMSE-G01.

修訂表 TABLE OF AMENDMENTS

修改 REV	日期 DATE	繪圖 BY	核對 SUB	負責 APP	說明 DESCRIPTION

SIGNED

黎國忠 LAI KWOK CHUNG, JONES
 核准發出 APPROVED FOR ISSUE
 18/09/2023
 發出日期 DATE OF ISSUE

圖則名稱 DRAWING TITLE
鐵路條例 (第519章) 屯門南延線
 RAILWAYS ORDINANCE (CHAPTER 519) TUEN MUN SOUTH EXTENSION

暫時封閉湖景路花園及部分屯門海濱花園和毗鄰的行人路
 TEMPORARY CLOSURE OF WU KING ROAD GARDEN AND PART OF TUEN MUN PROMENADE AND ITS ADJACENT FOOTPATHS

圖號 DRAWING NO. **TMSE/G06/0002/1**
 比例 SCALE **1:1000 (A1)**
 或如圖示 OR AS SHOWN

香港特別行政區政府
 THE GOVERNMENT OF THE HONG KONG SPECIAL ADMINISTRATIVE REGION
路政署
 HIGHWAYS DEPARTMENT
鐵路拓展處
 RAILWAY DEVELOPMENT OFFICE