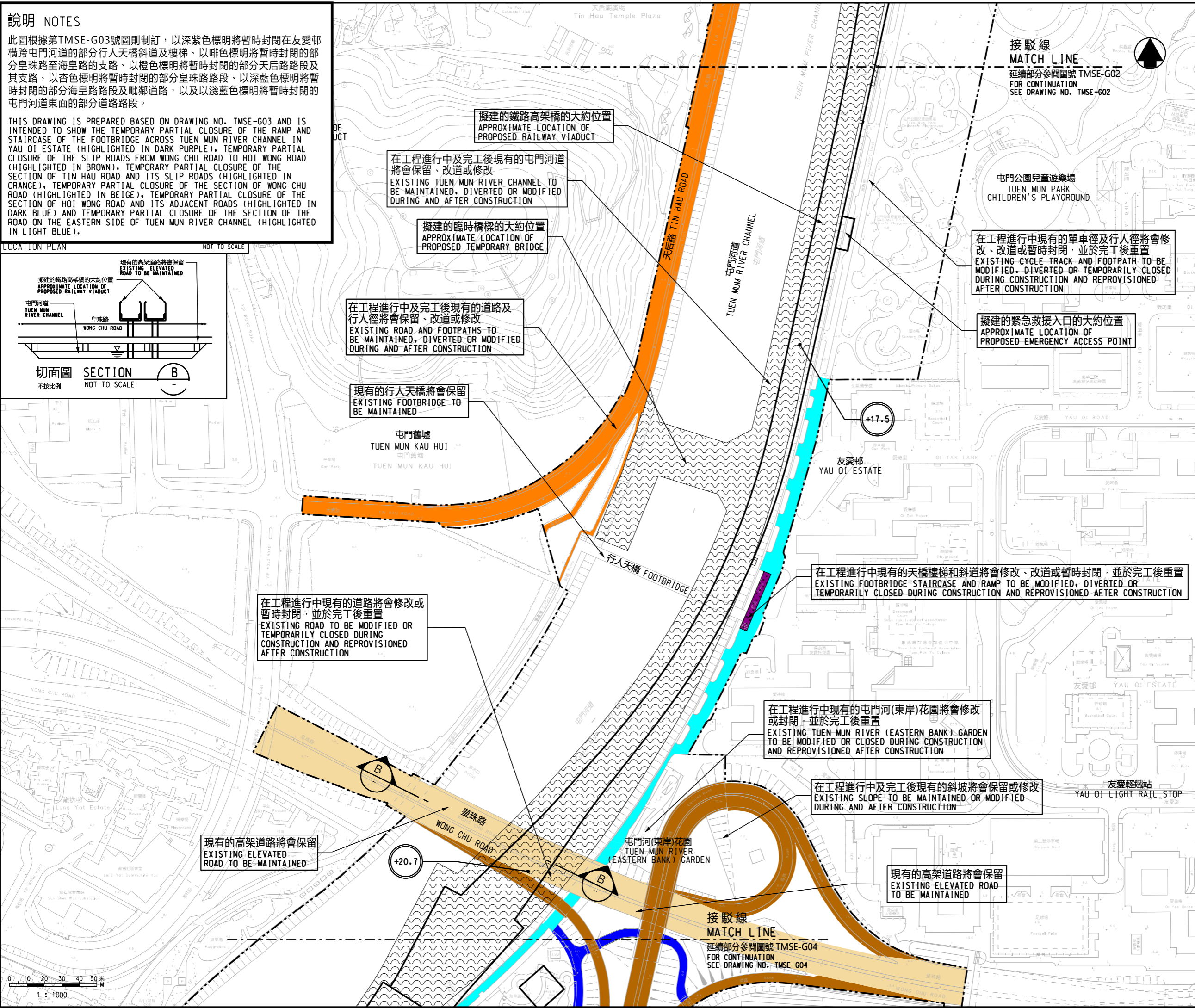
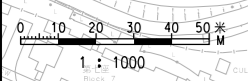
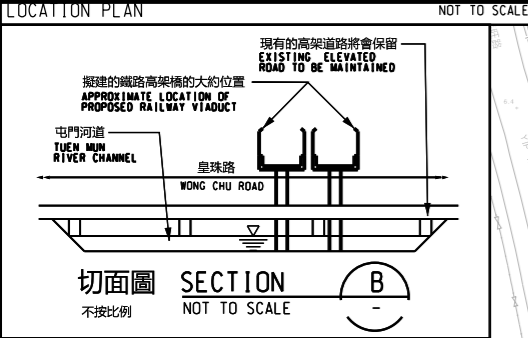


**說明 NOTES**

此圖根據第TMSE-G03號圖則制訂，以深紫色標明將暫時封閉在友愛邨橫跨屯門河道的部分行人天橋斜道及樓梯、以啡色標明將暫時封閉的部分皇珠路至海皇路的支路、以橙色標明將暫時封閉的部分天后路路段及其支路、以杏色標明將暫時封閉的部分皇珠路路段、以深藍色標明將暫時封閉的部分海皇路路段及毗鄰道路，以及以淺藍色標明將暫時封閉的屯門河道東面的部分道路路段。

THIS DRAWING IS PREPARED BASED ON DRAWING NO. TMSE-G03 AND IS INTENDED TO SHOW THE TEMPORARY PARTIAL CLOSURE OF THE RAMP AND STAIRCASE OF THE FOOTBRIDGE ACROSS TUEN MUN RIVER CHANNEL IN YAU OI ESTATE (HIGHLIGHTED IN DARK PURPLE), TEMPORARY PARTIAL CLOSURE OF THE SLIP ROADS FROM WONG CHU ROAD TO HOI WONG ROAD (HIGHLIGHTED IN BROWN), TEMPORARY PARTIAL CLOSURE OF THE SECTION OF TIN HAU ROAD AND ITS SLIP ROADS (HIGHLIGHTED IN ORANGE), TEMPORARY PARTIAL CLOSURE OF THE SECTION OF WONG CHU ROAD (HIGHLIGHTED IN BEIGE), TEMPORARY PARTIAL CLOSURE OF THE SECTION OF HOI WONG ROAD AND ITS ADJACENT ROADS (HIGHLIGHTED IN DARK BLUE) AND TEMPORARY PARTIAL CLOSURE OF THE ROAD ON THE EASTERN SIDE OF TUEN MUN RIVER CHANNEL (HIGHLIGHTED IN LIGHT BLUE).



- 圖例 LEGEND:**
- 方案界線  
BOUNDARY OF THE SCHEME
  - 擬建的鐵路車站及其設施  
PROPOSED RAILWAY STATION AND ASSOCIATED FACILITIES
  - 現有的港鐵車站及輕鐵站  
EXISTING MTR STATION AND LIGHT RAIL STOP
  - 擬設置地盤設施的臨時施工區  
PROPOSED TEMPORARY WORKS AREA FOR SITE FACILITIES
  - 現有的行人天橋將受影響  
EXISTING FOOTBRIDGE TO BE AFFECTED
  - 可能在其上進行填海工程或其他工程的政府前濱或海床  
GOVERNMENT FORESHORE OR SEABED OVER OR UPON WHICH RECLAMATION OR OTHER WORKS MAY BE CARRIED OUT
  - +18.0  
以主水平基準為依據之擬建軌道大約水平 (米)  
PROPOSED APPROXIMATE TRACK LEVEL IN m P.D.

**一般說明 GENERAL NOTES**  
1. 有關一般說明參閱圖號 TMSE-G01.  
FOR GENERAL NOTES, REFER TO DRAWING NO. TMSE-G01.

修訂表  
TABLE OF AMENDMENTS

修改 REV	日期 DATE	繪圖 BY	核對 SUB	負責 APP	說明 DESCRIPTION

**SIGNED**

獲准發出  
APPROVED FOR ISSUE

29/09/2023

發出日期 DATE OF ISSUE

謝孟軒 TSE MANG HIN  
路政署  
總工程師 /  
鐵路拓展 (1-3)  
CHIEF ENGINEER /  
RAILWAY DEVELOPMENT (1-3)  
HIGHWAYS DEPARTMENT

圖則名稱 DRAWING TITLE  
**鐵路條例 (第519章)  
屯門南延線**  
RAILWAYS ORDINANCE (CHAPTER 519)  
TUEN MUN SOUTH EXTENSION

暫時封閉在友愛邨橫跨屯門河道的行人天橋斜道及樓梯、皇珠路至海皇路的支路、天后路路段及其支路、皇珠路路段、海皇路路段及毗鄰道路及屯門河道東面的道路路段  
TEMPORARY CLOSURE OF A RAMP AND STAIRCASE OF THE FOOTBRIDGE ACROSS TUEN MUN RIVER CHANNEL IN YAU OI ESTATE SLIP ROADS FROM WONG CHU ROAD TO HOI WONG ROAD, A SECTION OF TIN HAU ROAD AND ITS SLIP ROADS, A SECTION OF WONG CHU ROAD, A SECTION OF HOI WONG ROAD AND ITS ADJACENT ROADS AND A SECTION OF THE ROAD ON THE EASTERN SIDE OF TUEN MUN RIVER CHANNEL

圖號 DRAWING NO. **TMSE/G03/0003/1** 比例 SCALE **1:1000 (A1)**  
或如圖示  
AS SHOWN