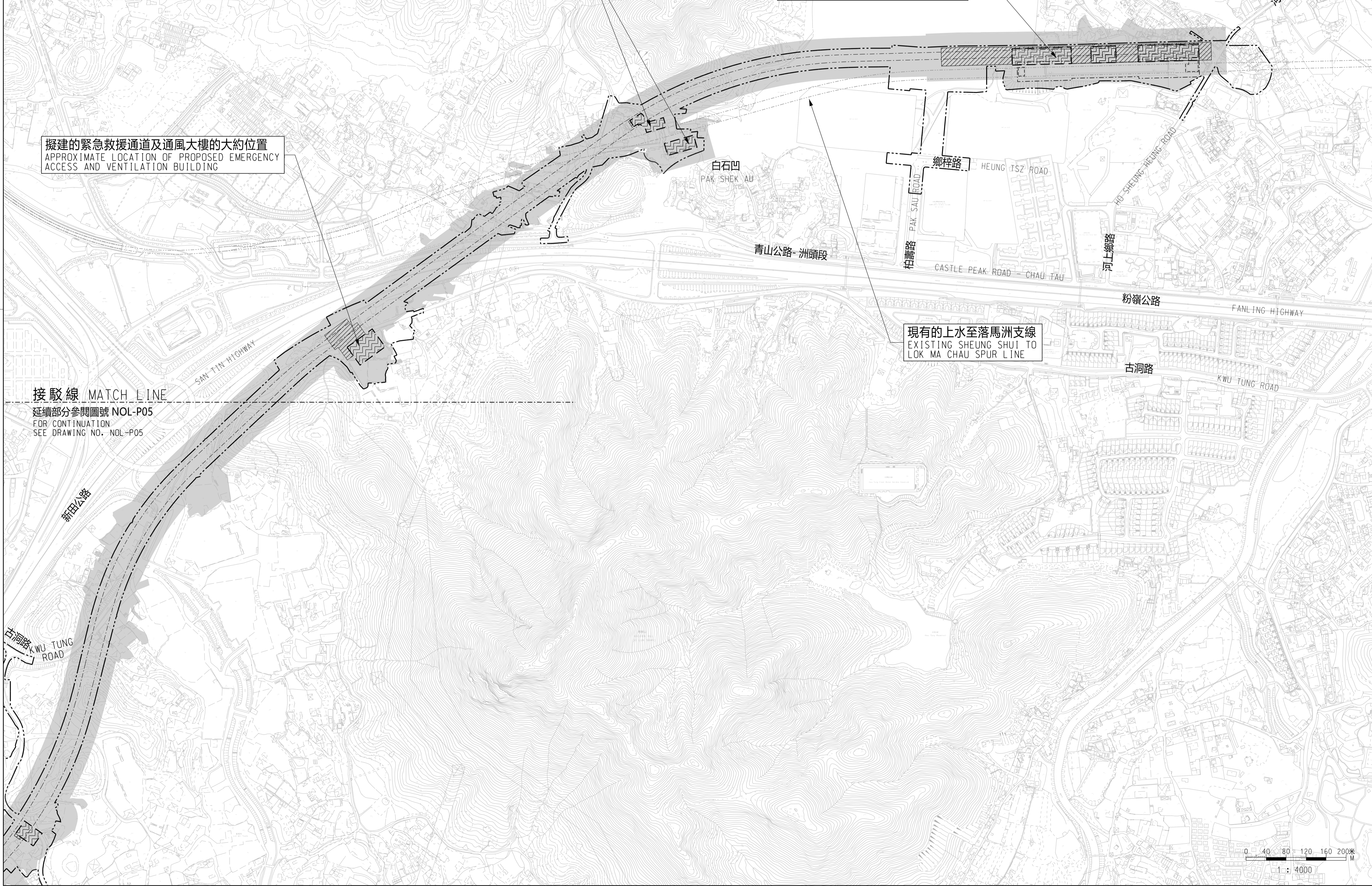


位置圖  
LOCATION PLAN  
不按比例  
NOT TO SCALE



擬建的緊急救援通道及其他鐵路設施的大約位置  
APPROXIMATE LOCATION OF PROPOSED EMERGENCY ACCESS AND OTHER RAILWAY FACILITIES

擬建在古洞的鐵路車站及相關鐵路設施的大約位置  
APPROXIMATE LOCATION OF PROPOSED RAILWAY STATION AND ASSOCIATED RAILWAY FACILITIES AT KWU TUNG

擬建的緊急救援通道及通風大樓的大約位置  
APPROXIMATE LOCATION OF PROPOSED EMERGENCY ACCESS AND VENTILATION BUILDING

現有的上水至落馬洲支線  
EXISTING SHEUNG SHUI TO LOK MA CHAU SPUR LINE

接駁線 MATCH LINE  
延續部分參閱圖號 NOL-P05  
FOR CONTINUATION  
SEE DRAWING NO. NOL-P05

圖例 LEGEND :

- 方案界線  
BOUNDARY OF THE SCHEME
- 擬建的鐵路車站及相關鐵路設施  
PROPOSED RAILWAY STATION AND ASSOCIATED RAILWAY FACILITIES
- 就建築工程 (包括在方案界線以外進行的建築工程) 與方案或鐵路的管理或維修不相容可使建築圖則或建築工程展開的控制的土地範圍  
AREA OF LAND ON WHICH CONTROL OF BUILDING PLANS OR COMMENCEMENT OF BUILDING WORKS (INCLUDING BUILDING WORKS OUTSIDE THE BOUNDARIES OF THE SCHEME) WHICH ARE INCOMPATIBLE WITH THE SCHEME OR THE OPERATION OR MAINTENANCE OF THE RAILWAY MAY BE REQUIRED
- 擬建的鐵路設施 (地下)  
PROPOSED RAILWAY FACILITIES (UNDERGROUND)
- 現有的鐵路路軌中線  
EXISTING RAILWAY TRACK CENTRE LINE
- 擬建的鐵路路軌中線  
PROPOSED RAILWAY TRACK CENTRE LINE
- 現有的港鐵車站  
EXISTING MTR STATION
- 於其他鐵路項目擬建的鐵路車站及相關鐵路設施  
PROPOSED RAILWAY STATION AND ASSOCIATED RAILWAY FACILITIES UNDER ANOTHER RAILWAY PROJECT

修訂表  
TABLE OF AMENDMENTS

修改 REV	日期 DATE	繪圖 BY	核對 SUB	負責 APP	說明 DESCRIPTION

SIGNED  
林雨舟 LAM YU CHAU  
獲准發出  
APPROVED FOR ISSUE  
19 SEP 2023  
發出日期 DATE OF ISSUE  
路政署  
鐵路拓展處副處長 (1)  
GOVERNMENT ENGINEER/  
RAILWAY DEVELOPMENT (1)  
HIGHWAYS DEPARTMENT

圖則名稱 DRAWING TITLE  
鐵路條例 (第519章)  
北環線主線  
控制建築圖則及工程展開圖則  
6頁的第6頁  
RAILWAYS ORDINANCE (CHAPTER 519)  
NORTHERN LINK MAIN LINE  
CONTROL OF BUILDING PLANS AND  
COMMENCEMENT OF WORK PLAN (SHEET 6 OF 6)

圖號 DRAWING NO.  
NOL-P06  
比例 SCALE  
1:4000 (A1)  
或如圖示  
AS SHOWN

香港特別行政區政府  
THE GOVERNMENT OF THE HONG KONG  
SPECIAL ADMINISTRATIVE REGION  
路政署  
HIGHWAYS DEPARTMENT  
鐵路拓展處  
RAILWAY DEVELOPMENT OFFICE

