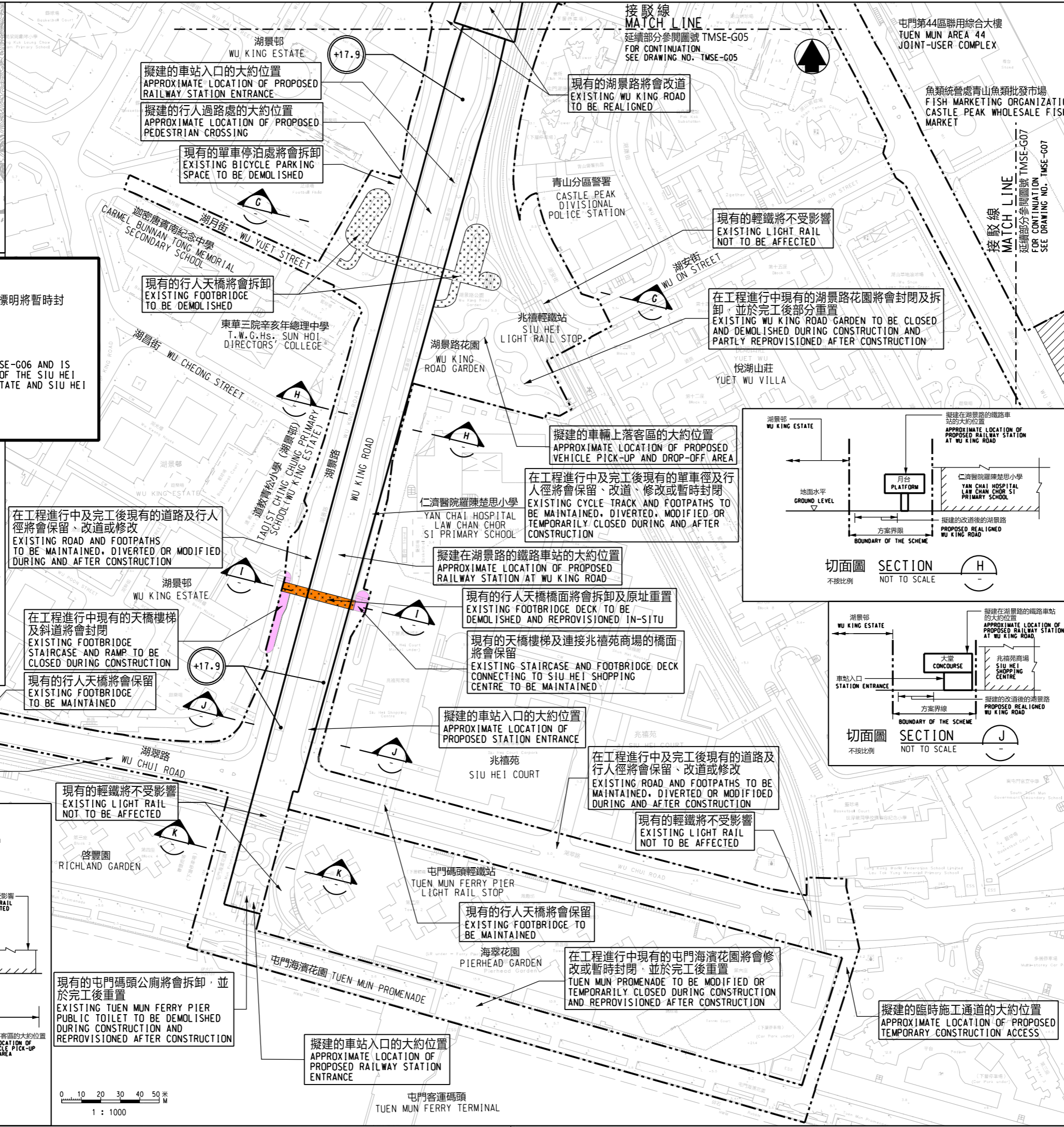
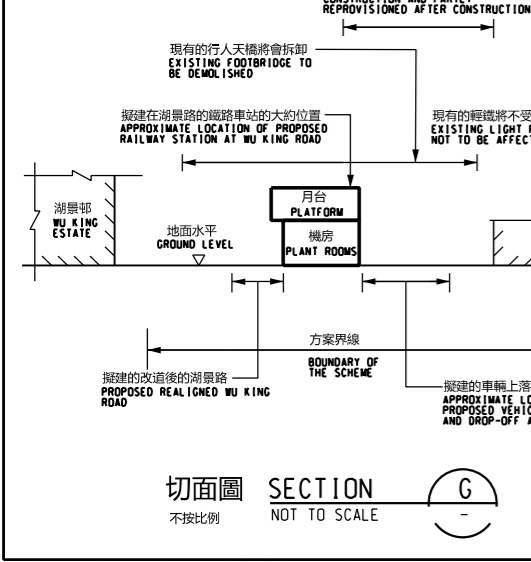
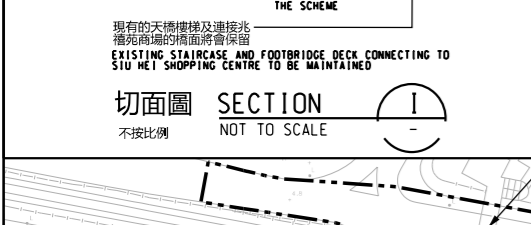
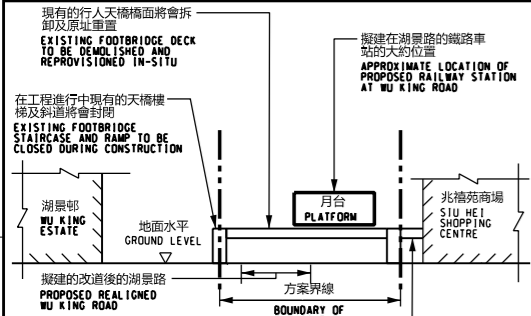


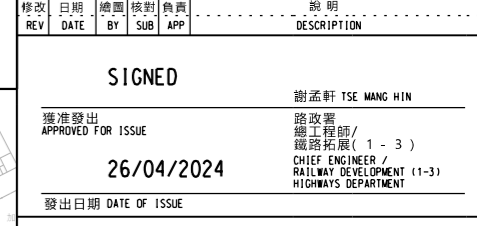
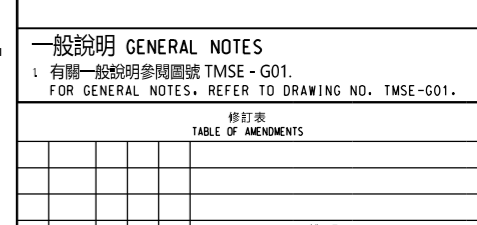
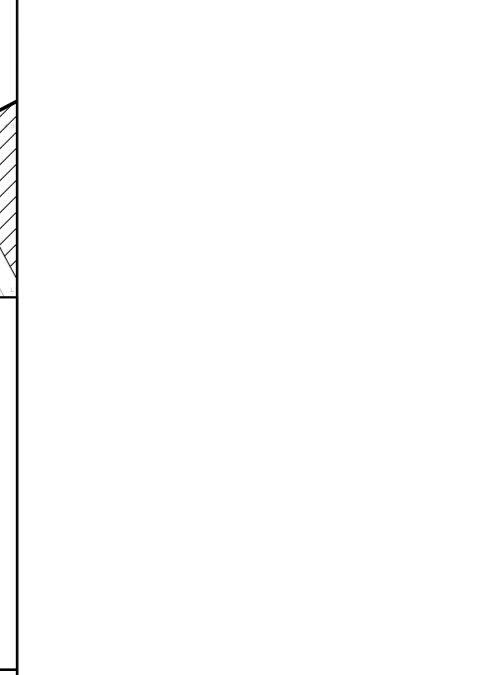
說明 NOTES

此圖根據第TMSE-G06號圖則制訂，以橙色及粉紅色標明將暫時封閉橫跨湖景路並連接湖景邨和兆禧苑的部分兆禧橋。

THIS DRAWING IS PREPARED BASED ON DRAWING NO. TMSE-G06 AND IS INTENDED TO SHOW THE TEMPORARY CLOSURE OF PARTS OF THE SIU HEI BRIDGE ACROSS WU KING ROAD CONNECTING WU KING ESTATE AND SIU HEI COURT (HIGHLIGHTED IN ORANGE AND PINK).



- 圖例 LEGEND:**
- 方案界線 BOUNDARY OF THE SCHEME
 - 擬建的鐵路車站及其設施 PROPOSED RAILWAY STATION AND ASSOCIATED FACILITIES
 - 現有的港鐵車站及輕鐵站 EXISTING MTR STATION AND LIGHT RAIL STOP
 - 擬設地盤設施的臨時施工區 AREA FOR SITE FACILITIES
 - 現有的行人天橋將受影響 EXISTING FOOTBRIDGE TO BE AFFECTED
 - 可能在其上進行填海工程或其他工程的政府前濱或海床 GOVERNMENT FORESHORE OR SEABED OVER OR UPON WHICH RECLAMATION OR OTHER WORKS MAY BE CARRIED OUT
 - +18.0 以主水平基準為依據之擬建路軌大約水平 (米) PROPOSED APPROXIMATE TRACK LEVEL IN m P.D.



一般說明 GENERAL NOTES

1. 有關一般說明參閱圖號 TMSE-G01. FOR GENERAL NOTES, REFER TO DRAWING NO. TMSE-G01.

修改 REV	日期 DATE	繪圖 BY	核對 SUB	負責 APP	說明 DESCRIPTION

SIGNED

獲准發出 APPROVED FOR ISSUE: 26/04/2024

發出日期 DATE OF ISSUE: 26/04/2024

圖則名稱 DRAWING TITLE: **鐵路條例 (第519章) 屯門南延線**

暫時封閉橫跨湖景路並連接湖景邨和兆禧苑的部分兆禧橋

RAILWAYS ORDINANCE (CHAPTER 519) TUEN MUN SOUTH EXTENSION

TEMPORARY CLOSURE OF PARTS OF THE SIU HEI BRIDGE ACROSS WU KING ROAD CONNECTING WU KING ESTATE AND SIU HEI COURT

圖號 DRAWING NO.: **TMSE/G06/0008/1**

比例 SCALE: 1:1000 (A1) 或如圖示 AS SHOWN

香港特別行政區政府 THE GOVERNMENT OF THE HONG KONG SPECIAL ADMINISTRATIVE REGION

路政署 HIGHWAYS DEPARTMENT

鐵路拓展處 RAILWAY DEVELOPMENT OFFICE