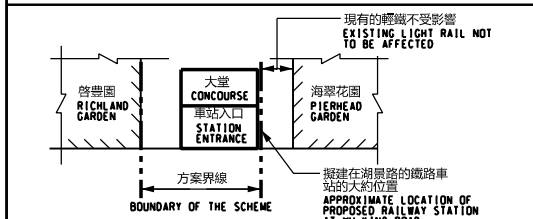
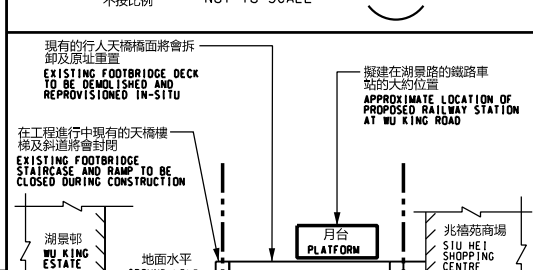


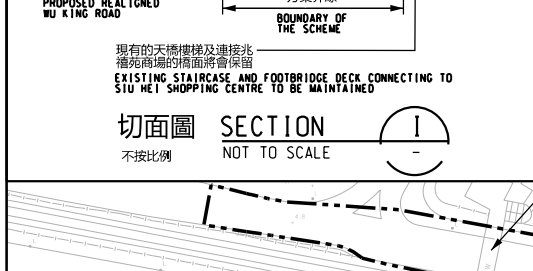
位置圖  
LOCATION PLAN



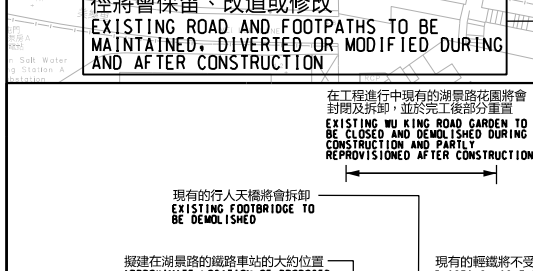
切面圖  
SECTION



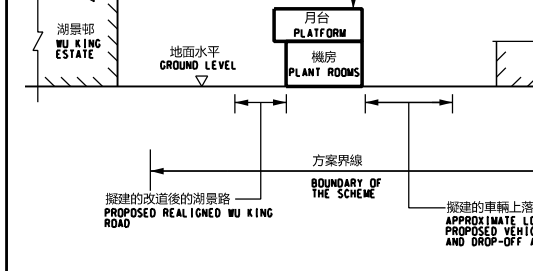
切面圖  
SECTION



切面圖  
SECTION



切面圖  
SECTION

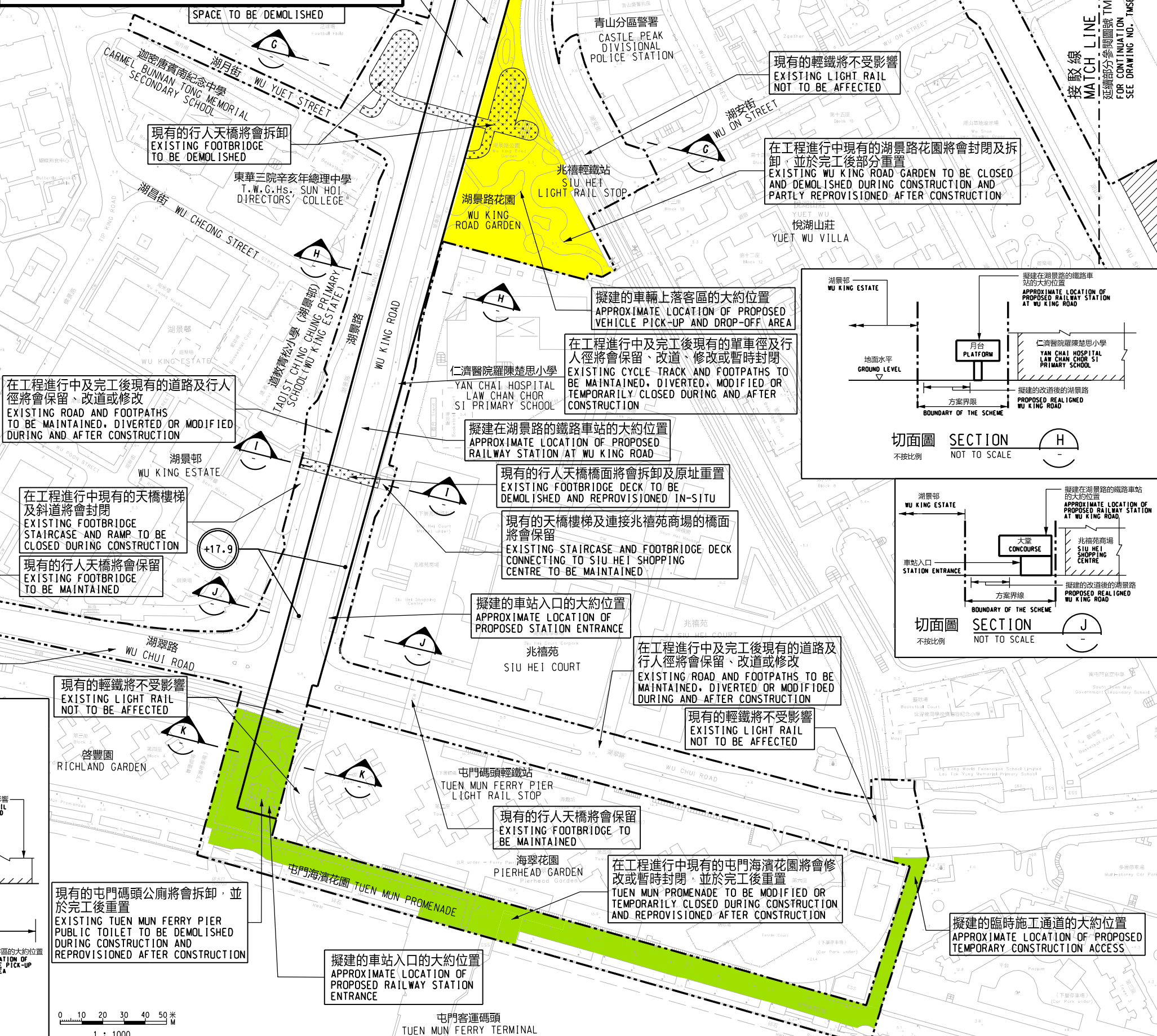


切面圖  
SECTION

## 說明 NOTES

此圖根據第TMSE-G06號圖則制訂，以黃色標明將暫時封閉的湖景路花園及以綠色標明將暫時封閉的部分屯門海濱花園和毗鄰的行人路。

THIS DRAWING IS PREPARED BASED ON DRAWING NO. TMSE-G06 AND IS INTENDED TO SHOW THE TEMPORARY CLOSURE OF WU KING ROAD GARDEN (HIGHLIGHTED IN YELLOW) AND TEMPORARY CLOSURE OF PART OF TUEN MUN PROMENADE AND ITS ADJACENT FOOTPATHS (HIGHLIGHTED IN GREEN).



## 圖例 LEGEND:

- 方案界線  
BOUNDARY OF THE SCHEME
- 擬建的鐵路車站及其設施  
PROPOSED RAILWAY STATION AND ASSOCIATED FACILITIES
- 現有的港鐵車站及輕鐵站  
EXISTING MTR STATION AND LIGHT RAIL STOP
- 擬設置地盤設施的臨時施工區  
PROPOSED TEMPORARY WORKS AREA FOR SITE FACILITIES
- 現有的行人天橋將受影響  
EXISTING FOOTBRIDGE TO BE AFFECTED
- 可能在其上進行填海工程或其他工程的政府前濱或海床  
GOVERNMENT FORESHORE OR SEABED OVER OR UPON WHICH RECLAMATION OR OTHER WORKS MAY BE CARRIED OUT
- +18.0  
以主水平基準為依據之擬建路軌大約水平 (米)  
PROPOSED APPROXIMATE TRACK LEVEL IN m P.D.

## 一般說明 GENERAL NOTES

- 有關一般說明參閱圖號 TMSE-G01.  
FOR GENERAL NOTES, REFER TO DRAWING NO. TMSE-G01.

修訂表 TABLE OF AMENDMENTS					說明 DESCRIPTION
修改 REV	日期 DATE	繪圖 BY	核對 SUB	負責 APP	

## SIGNED

獲准發出 APPROVED FOR ISSUE	謝孟軒 TSE MANG HIN, ROY 路政署 總工程師/ 鐵路拓展處 (1-3) CHIEF ENGINEER / RAILWAY DEVELOPMENT (1-3) HIGHWAYS DEPARTMENT
發出日期 DATE OF ISSUE	16/09/2024

## 圖則名稱 DRAWING TITLE

鐵路條例 (第519章)  
屯門南延線  
暫時封閉湖景路花園及部分屯門海濱花園和毗鄰的行人路  
RAILWAYS ORDINANCE (CHAPTER 519)  
TUEN MUN SOUTH EXTENSION  
TEMPORARY CLOSURE OF WU KING ROAD GARDEN AND PART OF TUEN MUN PROMENADE AND ITS ADJACENT FOOTPATHS

## 圖號 DRAWING NO.

TMSE/G06/0002/2

## 比例 SCALE

1:1000 (A1)  
或如圖示  
OR AS SHOWN