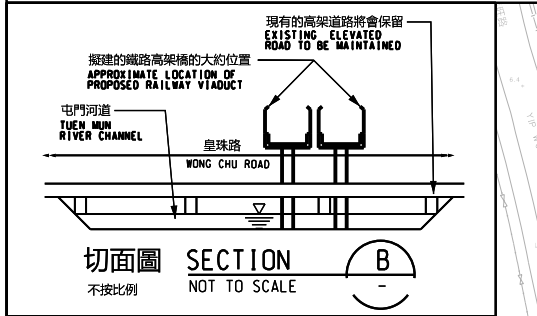


位置圖
LOCATION PLAN



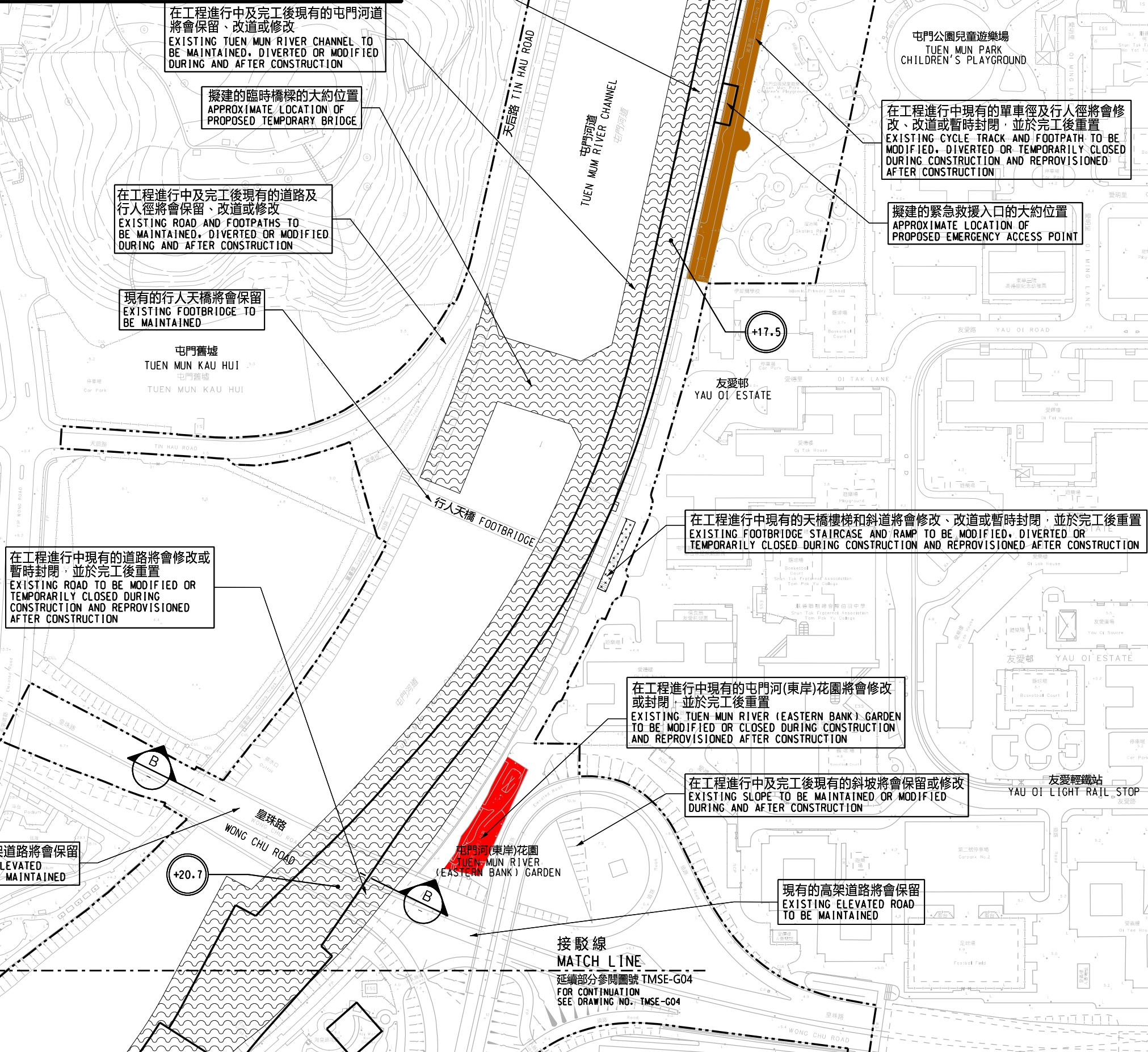
切面圖
SECTION



說明 NOTES

此圖根據第TMSE-G03號圖則制訂，以啡色標明將暫時封閉的部分屯門公園及以紅色標明將暫時封閉的部分屯門河(東岸)花園。

THIS DRAWING IS PREPARED BASED ON DRAWING NO. TMSE-G03 AND IS INTENDED TO SHOW THE TEMPORARY CLOSURE OF PART OF TUEN MUN PARK (HIGHLIGHTED IN BROWN) AND TEMPORARY CLOSURE OF TUEN MUN RIVER (EASTERN BANK) GARDEN (HIGHLIGHTED IN RED).



- 圖例 LEGEND:**
- 方案界線
BOUNDARY OF THE SCHEME
 - 擬建的鐵路車站及其設施
PROPOSED RAILWAY STATION AND ASSOCIATED FACILITIES
 - 現有的港鐵車站及輕鐵站
EXISTING MTR STATION AND LIGHT RAIL STOP
 - 擬設置地盤設施的臨時施工區
PROPOSED TEMPORARY WORKS AREA FOR SITE FACILITIES
 - 現有的行人天橋將受影響
EXISTING FOOTBRIDGE TO BE AFFECTED
 - 可能在其上進行填海工程或其他工程的政府前濱或海床
GOVERNMENT FORESHORE OR SEABED OVER OR UPON WHICH RECLAMATION OR OTHER WORKS MAY BE CARRIED OUT
 - +18.0
以主水平基準為依據之擬建路軌大約水平 (米)
PROPOSED APPROXIMATE TRACK LEVEL IN m P.D.

一般說明 GENERAL NOTES

1 有關一般說明參閱圖號 TMSE - G01.
FOR GENERAL NOTES, REFER TO DRAWING NO. TMSE-G01.

修訂表 TABLE OF AMENDMENTS					
修改 REV	日期 DATE	繪圖 BY	核對 SUB	負責 APP	說明 DESCRIPTION

SIGNED

謝孟軒 TSE MANG HIN, ROY
路政署
總工程師/
鐵路拓展(1-3)
CHIEF ENGINEER/
RAILWAY DEVELOPMENT (1-3)
HIGHWAYS DEPARTMENT

16/09/2024
發出日期 DATE OF ISSUE

圖則名稱 DRAWING TITLE
**鐵路條例 (第519章)
屯門南延線
暫時封閉屯門河 (東岸) 花園及部分屯門公園**

RAILWAYS ORDINANCE (CHAPTER 519)
**TUEN MUN SOUTH EXTENSION
TEMPORARY CLOSURE OF TUEN MUN RIVER (EASTERN BANK)
GARDEN AND PART OF TUEN MUN PARK**

圖號 DRAWING NO.
TMSE/G03/0002/2

比例 SCALE
**1:1000 (A1)
或如圖示
OR AS SHOWN**

**香港特別行政區政府
THE GOVERNMENT OF THE HONG KONG
SPECIAL ADMINISTRATIVE REGION**

**路政署
HIGHWAYS DEPARTMENT**

**鐵路拓展處
RAILWAY DEVELOPMENT OFFICE**