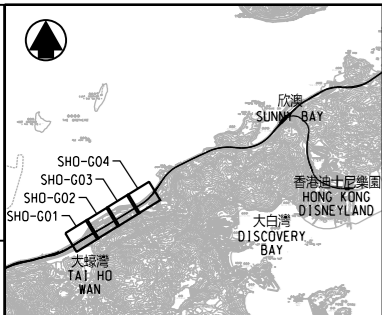
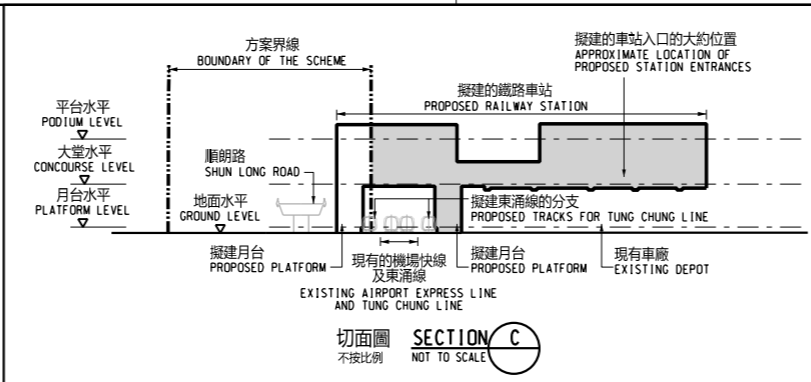


DRAWING NO. SHD/G02/0003/1



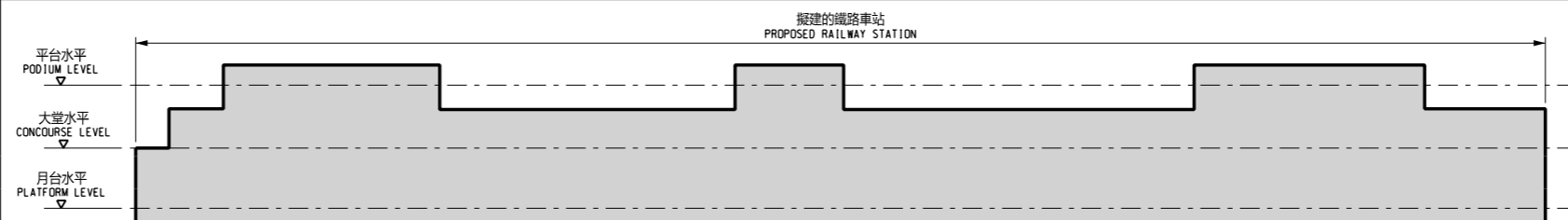
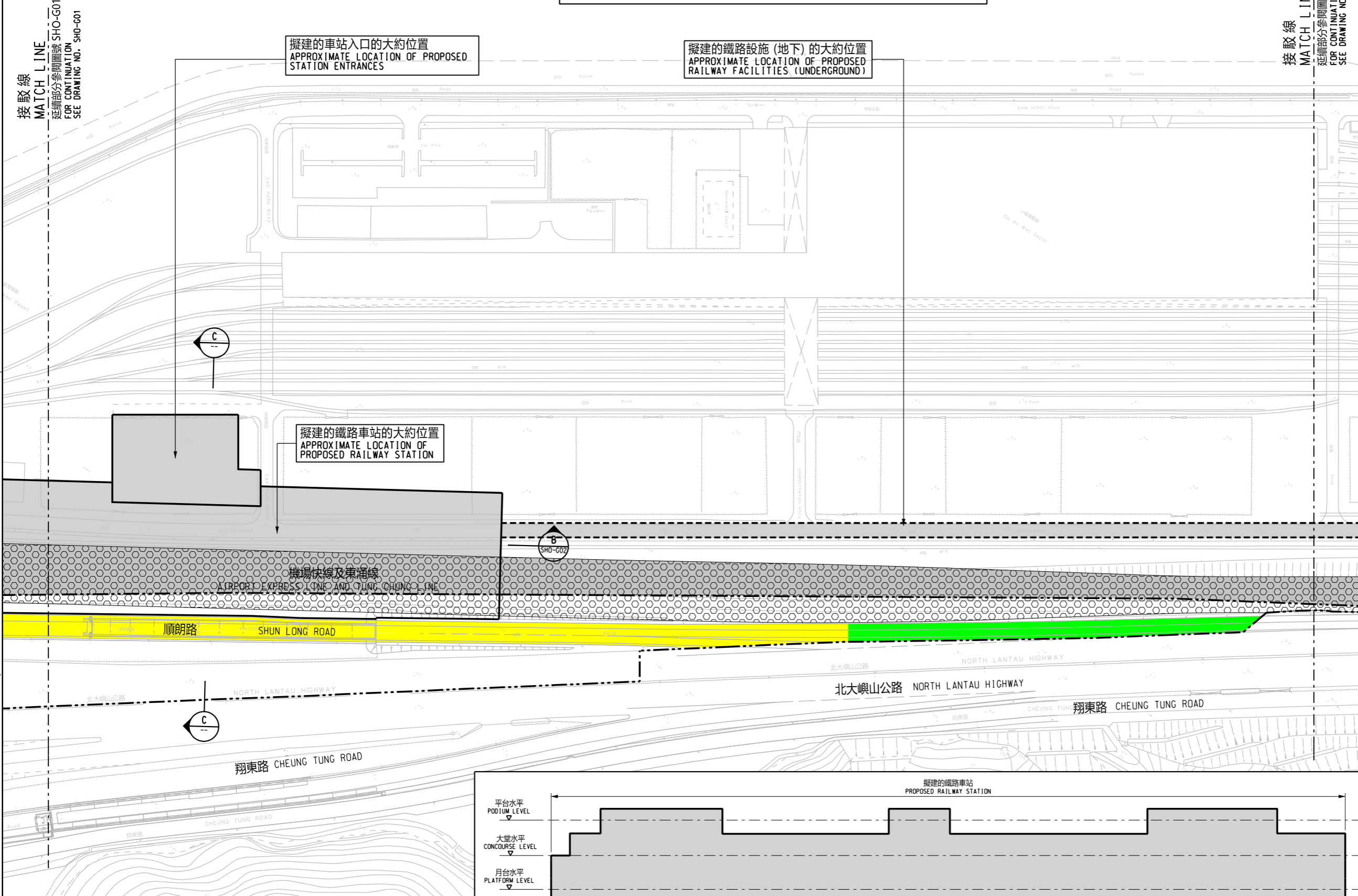
位置圖 LOCATION PLAN 不按比例 NOT TO SCALE



說明 NOTES

此圖根據第 SHD-G02 號圖則制訂，以黃色標明暫時封閉毗鄰小蠔灣車廠的部分順朗路路段，及以綠色標明暫時封閉毗鄰小蠔灣車廠的部分北大嶼山公路路段。 THIS DRAWING IS PREPARED BASED ON DRAWING NO. SHD-G02 AND IS INTENDED TO SHOW THE TEMPORARY PARTIAL CLOSURE OF THE SECTION OF SHUN LONG ROAD ADJACENT TO THE SIU HO WAN DEPOT (HIGHLIGHTED IN YELLOW), AND THE TEMPORARY PARTIAL CLOSURE OF THE SECTION OF NORTH LANTAU HIGHWAY ADJACENT TO THE SIU HO WAN DEPOT (HIGHLIGHTED IN GREEN).

圖例 LEGEND: 方案界線 BOUNDARY OF THE SCHEME, 擬建的鐵路車站及其設施 PROPOSED RAILWAY STATION AND ASSOCIATED FACILITIES, 擬建的鐵路設施 (地下) PROPOSED RAILWAY FACILITIES (UNDERGROUND), 加設路軌及道岔，從而由現有的機場快線及東涌線共用軌道加設東涌線的分支 ADDITION OF TRACKS AND TURNOUTS FOR BIFURCATING TUNG CHUNG LINE FROM SHARED TRACK OF EXISTING AIRPORT EXPRESS LINE AND TUNG CHUNG LINE, 在現有鐵路範圍內的擬建工程 (在此範圍內的所有擬建鐵路工程並不屬於方案部分) PROPOSED WORKS WITHIN THE EXISTING RAILWAY AREA (ALL PROPOSED RAILWAY WORKS WITHIN THIS AREA ARE NOT PART OF THE SCHEME)



一般說明 GENERAL NOTES 1. 有關一般說明參閱圖號 SHD-G01. FOR GENERAL NOTES, REFER TO DRAWING NO. SHD-G01.

Table with 5 columns: REV, DATE, BY, SUB, APP. Description: 修訂表 TABLE OF AMENDMENTS

SIGNED 黃剛揚 WONG KONG YEUNG 路政署 鐵路拓展處處長 (2) GOVERNMENT ENGINEER/ RAILWAY DEVELOPMENT (2) HIGHWAYS DEPARTMENT 29/05/2026 發出日期 DATE OF ISSUE

圖則名稱 DRAWING TITLE 鐵路條例(第519章) 位於小蠔灣的鐵路車站 暫時封閉毗鄰小蠔灣車廠的順朗路及北大嶼山公路路段 RAILWAYS ORDINANCE (CHAPTER 519) RAILWAY STATION AT SIU HO WAN TEMPORARY CLOSURE OF SECTIONS OF SHUN LONG ROAD AND NORTH LANTAU HIGHWAY ADJACENT TO THE SIU HO WAN DEPOT

圖號 DRAWING NO. SHD/G02/0003/1 比例 SCALE 1:1000 (A1) 或如圖示 AS SHOWN

香港特別行政區政府 THE GOVERNMENT OF THE HONG KONG SPECIAL ADMINISTRATIVE REGION 路政署 HIGHWAYS DEPARTMENT 鐵路拓展處 RAILWAY DEVELOPMENT OFFICE

PLOT DRW: g:\oam\station\81_sss\workspace\p1\ctg\PDF_Color_600dpi_with_level.expor_1_13272.plt.ctg PRINTED BY: KEL VNW 29/5/2026 15:37:39 FILENAME: X:\Land\SHD_P000\PLD\Road_Closure\rev\shd\SHD-G02-0003-L.dgn